

DGS ERIS-230-FR Fixed freon gas detector



DGS ERIS-230-FR is the reliable explosion-proof gas detector developed for halocarbon (freon) gas leak detection. Special multi-climate zone design allows for high accuracy and response time. Frostproof OLED display expands operations experience of maintenance and settings on site, reducing the overall cost of gas monitoring. DGS ERIS-230-FR takes freon gases leaks under control.

Features and Benefits



Applications

Freon gas detection design
Multi-climate application
Expanded temperature range



Reliability and durability

100% of devices tested
Long-life sensors
Poison resistant sensor
Long-term stability



Performance and accuracy

Special sensor shield design
High-speed response
Light and sound alarm



Cost-effective

3 years - warranty
Typical lifetime 15 years
Free management software



Frostproof OLED display

Current concentration and units
Log trends and settings



Hart connector

Direct connection to the field communicator HART

Output signal

4-20 mA+HART
RS-485, Relays
Radio channel - LoRa, E-WIRE

Communication module

Setup with magnetic key or via mobile app

Frostproof OLED display

Current concentration, measurement units, log trends, settings, self-diagnostics results

Sensor shield

Splash and weather protection included in the basic package

Related controllers

• SGM ERIS-110



The multichannel gas detection controller accepts inputs currents 4-20 mA, mV bridges and RS-485 ModBus. Management and Log modules simplify setup and management features. Controller support detectors map survey feature. Channels are independent and support three relay outputs and 4-20mA current, RS-485 ModBus interface outputs each. Devices produced in 19" rackmount and DIN-rail mounted housings.

• SGM ERIS-130



The multichannel gas detection controller accepts inputs up to 8 4-20 mA sensors transmitters and up to 32 sensors transmitters at RS-485 ModBus. Control system support programming, log and detectors map survey features. Outputs allow setting up to the 4 relays, RS-232, RS-485 and Ethernet interfaces. Small DIN-rail mounted housing is suitable for construction compact size control systems.

• ERIS IMPERIUM



The intelligent controller accepts inputs from many sensors types and signals ranges. It designed for industrial automation purposes, fire exhausting and fire detection systems control. Modular configuration of controller benefits flexible setting and optimization for industrial automation applications. Devices produced in 19" rackmount and DIN-rail mounted housings.

General

| | |
|-----------------|--|
| Use | 3 wire, 4-20mA, RS485 MODBUS, HART output fixed detector with in-built relays for the protection from freon gas hazards. Incorporates a detector with frostproof OLED, status LEDs and fully configurable via magnetic key, RS485, HART, mobile app using Bluetooth. |
| Gases | FR - Halocarbon (freon) |
| Measuring range | Customized adjustment, see sensor data sheet |
| Sensors | Infrared (FR) |

Electrical

| | |
|-----------------------|---|
| Input voltage range | 13 to 36V DC (24V nominal) |
| Power consumption | 2,8 W in measurement mode |
| Current output relays | 2 alarm, 1 fault. 3 x 2A@220V AC SPDT |
| Communication | 4-20 mA, RS-485 MODBUS RTU, HART 7, LoRaWAN, E-Wire; Bluetooth for settings |
| Settings | Non-intrusive magnetic key (OLED), RS-485 (free software), Mobile APP (Bluetooth), HART |

Construction

| | |
|-------------------|--|
| Material | Epoxy coating aluminum alloy, SS316L Stainless steel |
| Dimensions | 150 x 120 x 235mm |
| Weight | 2,5kg (aluminum alloy), 4.5kg (316 stainless steel) |
| Mounting | 2 x mounting holes suitable for M6 or M7 bolts. |
| Cable entries | 2 x M20 (M25) cable entries. Seal to maintain IP rating. |
| Indication | OLED display, status LEDs |
| IP Rating | IP67 in accordance with EN60529:1992 |
| Temperature range | -60°C to +65°C (-76°F to 149°F) |

Certification

| | |
|----------|---|
| European | ATEX II 2 G Ex db [ia] IIC T6 Gb (Ta -45°C to +65°C) |
| EMC | ATEX (Directive 2014/34/EU) Electromagnetic Compatibility (Directive 2014/30/EU) |

Housing options

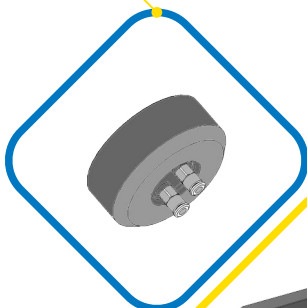
Aluminium
with epoxy coating



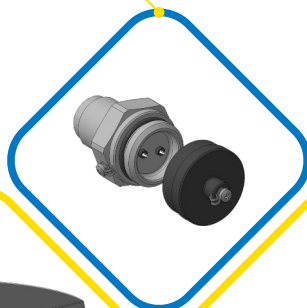
SS316L
Stainless steel



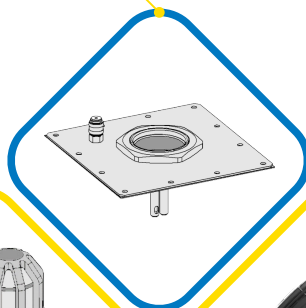
Calibration head



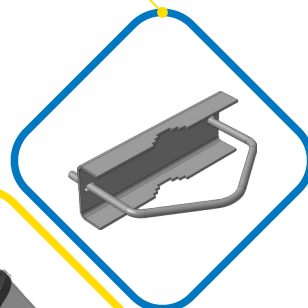
Connector for HART Communicator



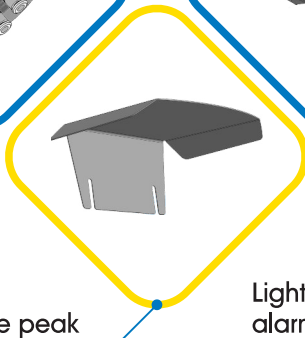
Air duct mounting kit



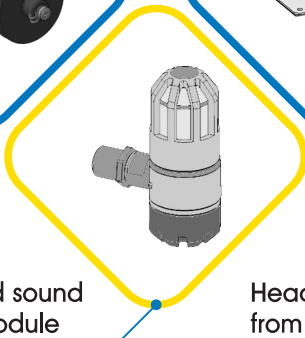
Pipe mounting kit



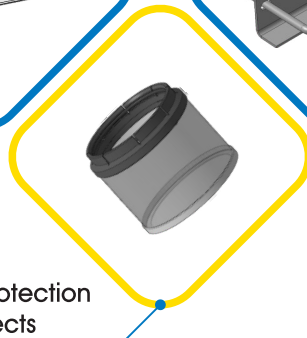
Protective peak



Light and sound alarm module



Head protection from insects



Selected instrumentation technologies



DGS
ERIS-210S



DGS
ERIS-210



DGS
ERIS-PID



ERIS
Advant 2



ERIS
Advant 4



ERIS
IP-330

"ERIS" LLC

Russia, Perm region, Chaikovsky, st. Promyshlennaya, 8/25
Tel. +7 342 4165511
info@eriskip.ru

Technical support:
Tel. +7 800 5500715
service@eriskip.ru

Find out more: www.eriskip.com

